

University of Central Florida Police Department

Traffic Statistical Report 2008-2010

The University of Central Florida, home to the UCF Knights, is a diverse institution of higher learning located in Orlando Florida. Home to over 56,000 students and approximately 10,500 faculty and staff members, UCF is the largest public university in the State of Florida and second largest by enrollment in the nation. With over 1400 acres of property on main campus, 785 acres developed, a stadium with a capacity of 45,000 spectators, an Arena with 10,000 seats, dormitories for over 4000 students and two off campus apartment complexes, UCF continues to expand to serve the higher education needs of our student population.

On main campus there are nine parking garages with over 10,100 parking spaces and an additional 17,500 parking spaces spread out over 40 surface lots. There are approximately 7 linear miles of roadway and multiple sidewalk drives that provide access for service vehicles. Over 52,500 permanent parking passes were sold in 2010 and 140,000 daily passes. The campus is served by a Lynx Public Transportation Terminal and has multiple shuttle bus stops.

There are also two satellite campuses. Serving the growing medical community at Lake Nona is the College of Medicine and the Biomedical Research Building. The Rosen School of Hospitality Management located on Universal Blvd. in Orlando contains two residence halls and a classroom building. Both the medical and hospitality programs are expanding to meet the needs of science and industry.

During football games the estimated population of the campus exceeds 60,000 people who visit the campus to see the 2010 Conference USA Championship Knights and celebrate during both pregame and postgame activities. During basketball season, the UCF Arena plays host to up to 10,000 fans rooting for their Knights. The Arena also schedules over 50 other events during the year including concerts with groups such as Kansas and Katy Perry.

Long range plans for the university include additional retail and restaurant space, a possible change in conference alignments and a projected increase in enrollment of 5% per year, makes the UCF campus a place of growing pedestrian and vehicular traffic.

To meet the traffic enforcement and policing obligations of the campus, the University of Central Florida Police Department has over 57 officers and 20 support personnel, providing full service law enforcement to the community through patrol, traffic, special events and community policing divisions. Officers provide a multitude of other traffic related services including traffic control during major events, motorist assists and removal of road obstructions. The department's focus is to reduce the Community's fear of crime by the prevention of crime, the protection of life and property; the preservation of peace, order, and safety; the enforcement of laws and ordinances; and the safeguarding of constitutional guarantees.

Methodology

The information and statistics contained in this report were compiled through use of the Computer Aided Dispatch System and the Report Management System. It is the department's mission to provide the most accurate numbers and details. However, various components of the system does not allow for exact numbers to be captured. A new and improved system of computer entries and statistical capture has been implemented in mid 2011. It is hoped that with the additional functions provided by this new system, it will allow for even more detailed analysis of traffic patterns and trends.

Percentages presented may not add up to 100% due to rounding or incomplete data in certain categories.

Charts and graphs may not add up to 100% due to rounding or incomplete data in certain categories.

Statistics dealing with parking spaces, garage spaces and passes sold were provided by UCF Parking Services.

Other related data compiled from various on-line sources as to student enrollment, projected enrollment and gross acreage.

Traffic Crashes: 2008

In 2008, UCF PD responded to one hundred and seventy eight (178) traffic crashes which resulted in reports being written. Additionally, officers responded to ninety one (91) hit and run crashes where no follow up information was available and a self-report of crash was given to the driver. The crashes were most heavily concentrated in the last four months of the year with just over forty one percent (41%) of the total for the year occurring September 1-December 31, 2008. Parking lot crashes occurred sixty three (63) times while there were ninety nine (99) undesignated locations and sixteen (16) other locations. Three (3) of the crashes involved alcohol, there were eight (8) injuries in three (3) crashes and over \$166,000 in damages reported.

Wednesdays has the highest frequency of traffic crashes with forty one (41) followed by Tuesdays with thirty four (34), Thursdays with twenty eight (28), Mondays with twenty three (23) and Fridays with twenty two (22). The weekend, Saturdays and Sundays only had thirty (30) crashes combined. The most popular time to crash was between 1300 and 1400 hrs. The hours of 0900-1800 combined for a total of seventy four (74%) of crashes occurring during those times.

Garage C was the most active garage with ten (10) crashes, Garage H had nine (9), Garage B had eight (8), Garage D had six (6), Garage A had four (4), Garage F had three (3) and Garages E & G both had one (1) crash each. It should be noted that in 2011, Garage H became Garage I when the new Garage H came on-line. The Garage Crash Chart shows all Garage H crashes as Garage I. Parking lots C3-seven (7) crashes, H4-five (5) crashes and D2-four (4) crashes were the most active surface lots. Crashes also occurred in lots B4, B6, B7, B8, B9, B13, B15, B17, C1, D1, E1, H3, H5, H6 and H7.

Eighty percent (80%) of crashes were not categorized for cause, six percent (6%) of crashes were caused by careless driving and six percent (6%) were caused by failure to yield right of way.

Citations: 2008

In 2008, UCF PD issued 1932 citations for various traffic charges over the year. Listed are some of the more prevalent crash causing violations or other significant charges:

Speeding	256
Violation of Traffic Control Device	77
Careless Driving	47
General Equipment Violations	100
Improper Backing	10
Ran Stop Sign	236
Ran Red Light	75
DUI	33
Under 21 alcohol violation	18
Suspended License w/o Knowledge	44
Suspended License w/ Knowledge	105
Seatbelt Violations	199

Traffic Crashes: 2009

In 2009, UCF PD responded to two hundred and twenty (220) traffic crashes which resulted in reports being written. Additionally, officers responded to one hundred and twenty (120) hit and run crashes where no follow up information was available and a self-report of crash was given to the driver. The crashes were evenly spread between the first four months of the year and the last four. January 2009-April 2009 saw thirty eight percent (38%) of the crashes while September 2009-December 2009 saw forty two percent (42%). Parking lot and garage crashes occurred thirty nine (39) times while there were one hundred and thirty seven (137) undesignated locations and forty four (44) other locations. Three (3) of the crashes involved alcohol, There were twenty five (25) injuries in fourteen (14) crashes and over \$300,000 in damages reported.

Tuesday has the highest frequency of traffic crashes with with forty nine (49) crashes. The next most day in frequency was Wednesdays with forty six (46), followed by Mondays and Thursdays with thirty four (34) each and Fridays with thirty two (32). The weekend, Saturdays and Sundays only had twenty five (25) crashes combined. Most crashes occur between 1300 and 1400 hrs. The hours of 0900-1800 combined for a total of sixty (60%) percent of crashes.

Garage B was the most active garage with sixteen (16) crashes followed closely by Garage D with fifteen (15). Garage C had nine (9) crashes while Garages F, G and H had two (2) crashes each while Garages A and E only had one (1) crash each. It should be noted that in 2011, Garage H was renamed Garage I when the new Garage H came on-line. The Garage Crash Chart shows all Garage H crashes as Garage I. Parking lot D1 was the most active surface lot with four (4) crashes while lots B6 and C3 had three (3) crashes each. Additional lots reporting crashes include B1, B2, B8, B9, B10, B15, D2, H5, H6-9 and E1.

Fifty two percent (52%) of crashes were caused by careless driving and forty four percent (44%) were caused by improper backing. Failure to yield right of way also accounted for eleven percent (11%).

Citations: 2009

In 2009, UCF PD issued 2835 citations for various traffic charges over the year. Listed are some of the more prevalent crash causing violations or other significant charges.

Speeding	225
Violation of Traffic Control Device	338
Careless Driving	89
General Equipment Violations	134
Improper Backing	25
Ran Stop Sign	242
Ran Red Light	107
DUI	84
Under 21 alcohol violation	97
Suspended License w/o Knowledge	44
Suspended License w/ Knowledge	113
Seatbelt Violations	218

Traffic Crashes: 2010

In 2010, UCF PD responded to two hundred and twenty three (223) traffic crashes which resulted in reports being written. Additionally, officers responded to ninety one (91) hit and run crashes where no follow up information was available and a self-report of crash was given to the driver. The crashes were more heavily concentrated in the last four months of the year. September 2010-December 2010 which saw forty one percent (41%) of the crashes while January 2010-April 2010 saw only thirty (30%). Parking lot and garage crashes occurred seventy six (76) times while there were eighty two (82) undesignated locations and seventy five (75) other locations. Four (4) of the crashes involved alcohol, There were seventeen (17) injuries in sixteen (16) crashes and over \$414,000 in damages reported.

The frequency of traffic crashes was evenly spread across Tuesdays, Thursdays and Fridays with forty three (43) crashes each. Mondays had forty (40) crashes; Wednesdays had thirty six (36) and the weekends, Saturday and Sunday, only combined for twenty eight (28) crashes. Most crashes occurred between 1300 and 1400 hrs. The hours of 0900-1800 combined for a total of sixty three percent (63%) of crashes.

Garages C and D were the most active garages with eleven (11) crashes each followed closely by Garage A and H with ten (10) each. Garage B had seven (7) crashes, Garage F had two (2) crashes and Garages E and G both had one (1) crash. It should be noted that in 2011, Garage H became Garage I when the new Garage H came on-line. The Garage Crash Chart shows all Garage H crashes as Garage I. Parking lot D1 was the most active surface lot with seven (7) crashes. Parking lot C3 had six (6) crashes and lot D2 had five (5). Other lots reporting crashes include B1, B2, B4, B6, B7, B8, B9, B14, B15, B16, B17, C2, H4, H5, H6-9 and E1.

Fifty two percent (52%) of crashes were caused by careless driving and forty four percent (44%) were caused by improper backing. This was the same percentage as in 2009. Failure to yield right of way also again accounted for eleven percent (11%).

Citations: 2010

In 2010, UCF PD issued 1769 citations for various traffic charges over the year. Listed are some of the more prevalent crash causing violations or other significant charges.

Speeding	147
Violation of Traffic Control Device	131
Careless Driving	100
General Equipment Violations	52
Improper Backing	36
Ran Stop Sign	111
Ran Red Light	52
DUI	83
Under 21 alcohol violation	61
Suspended License w/o Knowledge	26
Suspended License w/ Knowledge	70
Seatbelt Violations	137

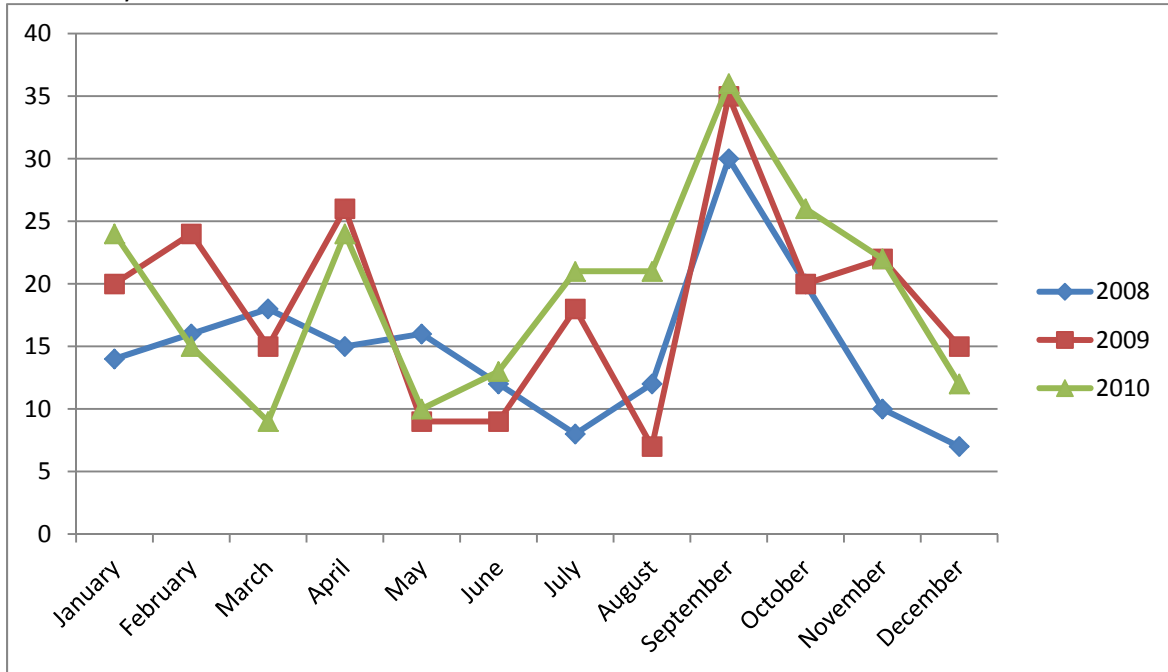
Crashes in Garages:

Year	A	B	C	D	E	F	G	H	I*
2008	4	8	10	6	1	3	1	X	9
2009	1	16	9	15	1	2	2	X	2
2010	10	7	11	11	1	2	1	X	10

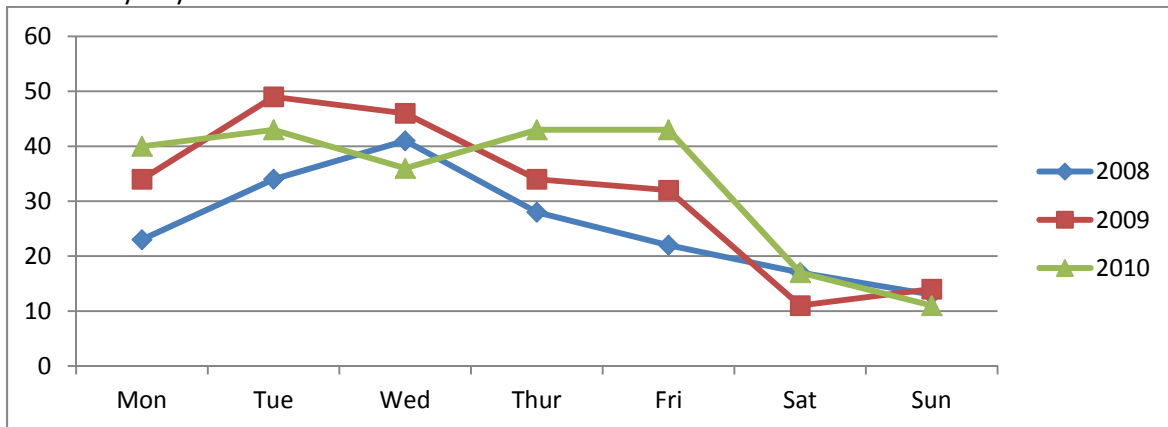
*note: the new H garage came online in the Spring of 2011. The I garage was previously the H garage.

	2008	2009	2010
Crashes at the Rosen College of Hospitality Management	4	2	0
Crashes at the Knights Circle Apartments	4	13	15
Crashes at the Pointe at Central	2	6	9

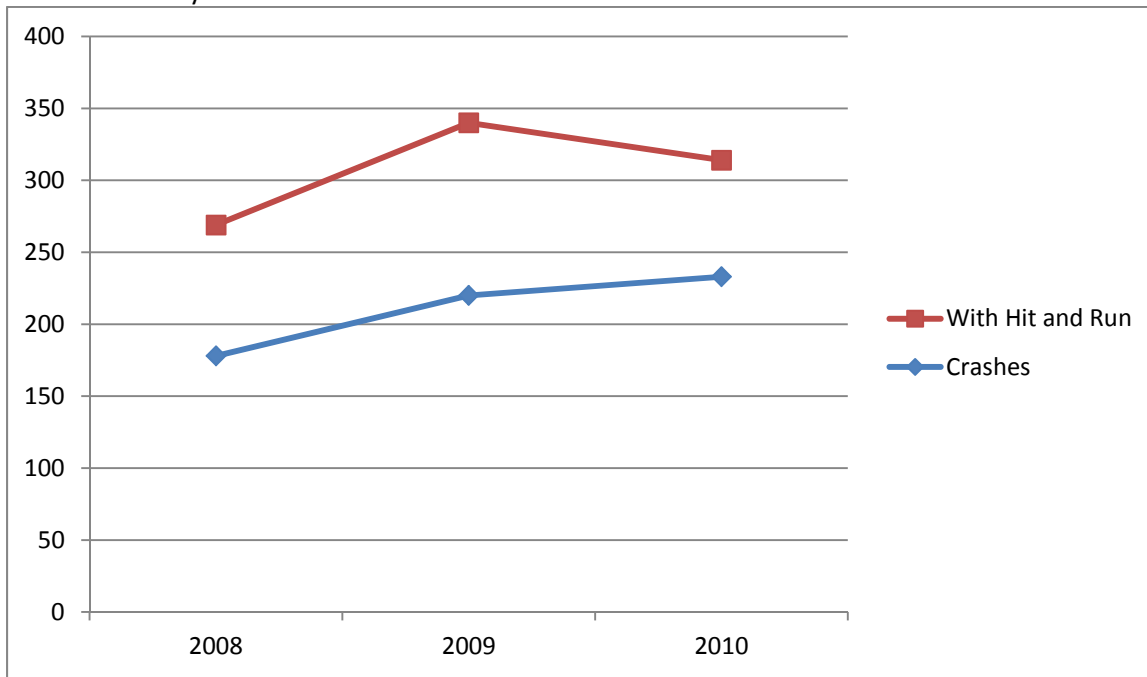
Crashes by Month:



Crashes by Day:



Total Crashes by Year:

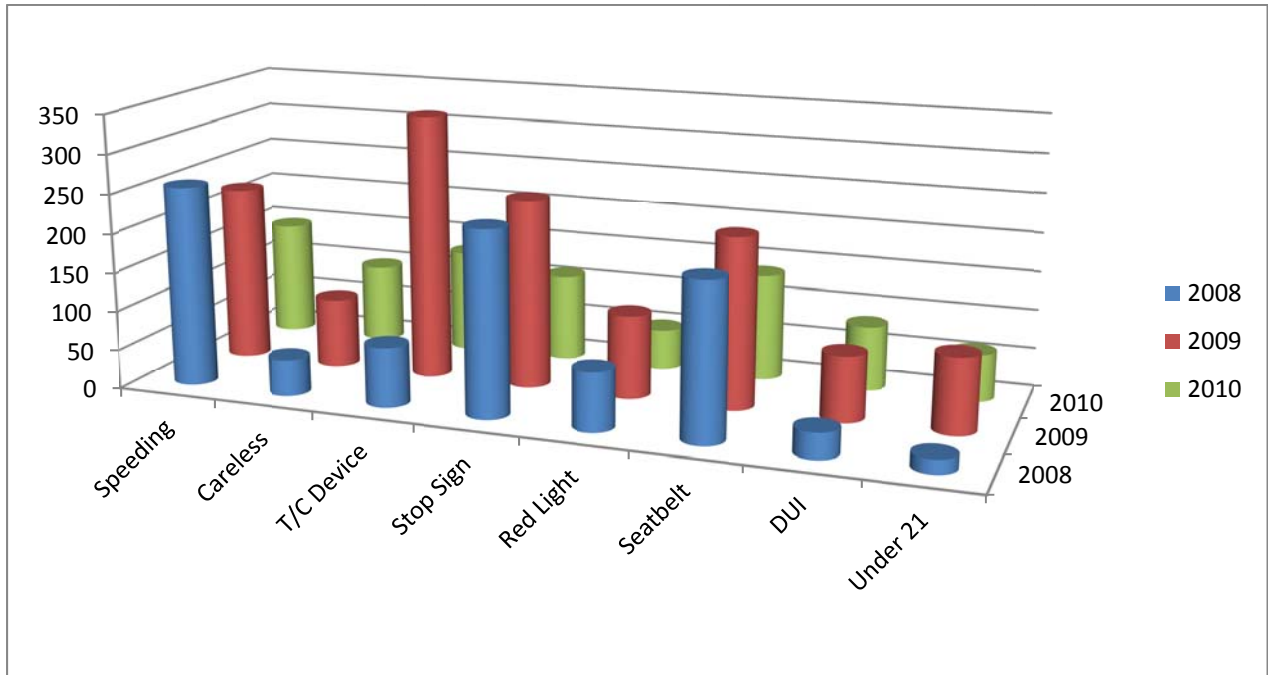


Crashes by Parking Lot and Other Property:

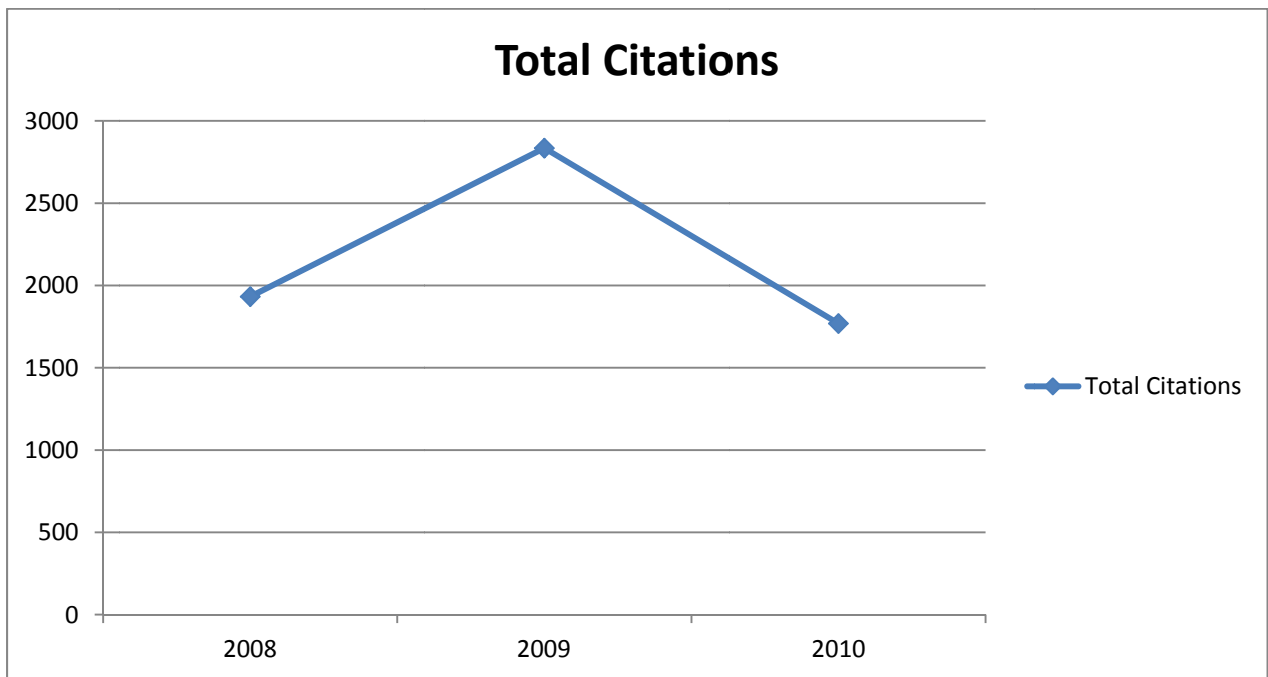
Years	Lot	B1	B2	B3	B4	B5	B6	B7	B8	B9	B10	B11	B12	B13	B14	B15	B16	B17
2008		0	0	0	3	0	1	2	1	2	0	0	0	1	0	3	0	1
2009		1	1	0	0	0	3	0	1	1	1	0	0	0	0	2	0	0
2010		2	1	0	2	0	1	1	3	3	0	0	0	0	1	3	1	2
Totals		3	2	0	5	0	5	3	5	6	1	0	0	1	1	8	1	3

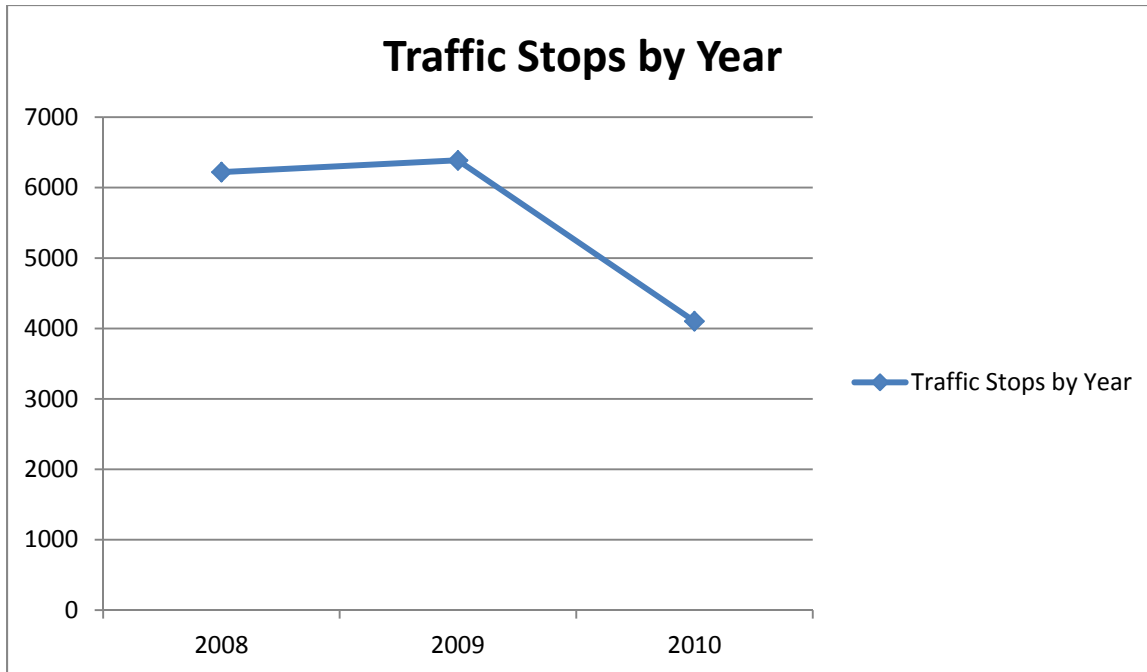
Years	C1	C2	C3	D1	D2	E1-14	H1	H2	H3	H4	H5	H6-9	H10	Rosen	Knights Cr	Pointe
2008	1	0	7	2	4	1	0	0	0	5	2	2	0	4	4	2
2009	0	0	3	4	2	1	0	0	0	0	2	1	0	2	13	6
2010	0	1	6	7	5	3	0	0	0	2	1	2	0	0	15	9
Totals	1	1	16	13	11	5	0	0	0	7	5	5	0	6	32	17

Citation Graphs:

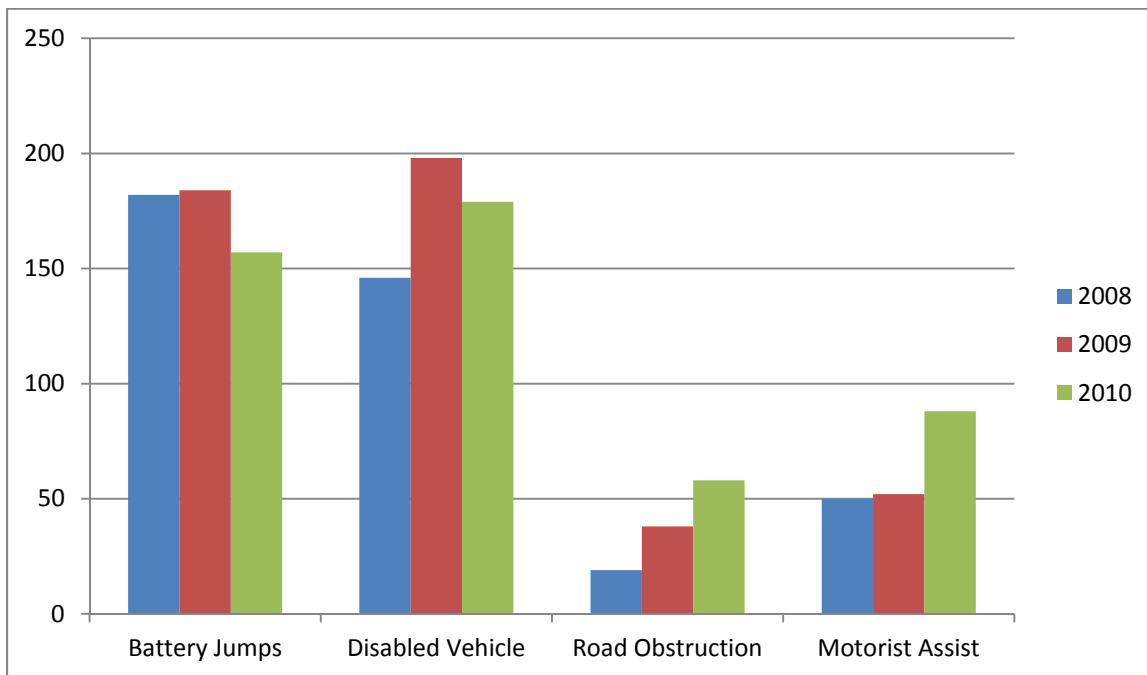


Total Citations by year:





Other Traffic Related Services and Calls



Report compiled and presented by Officer Peter Stephens, UCF Police Department.